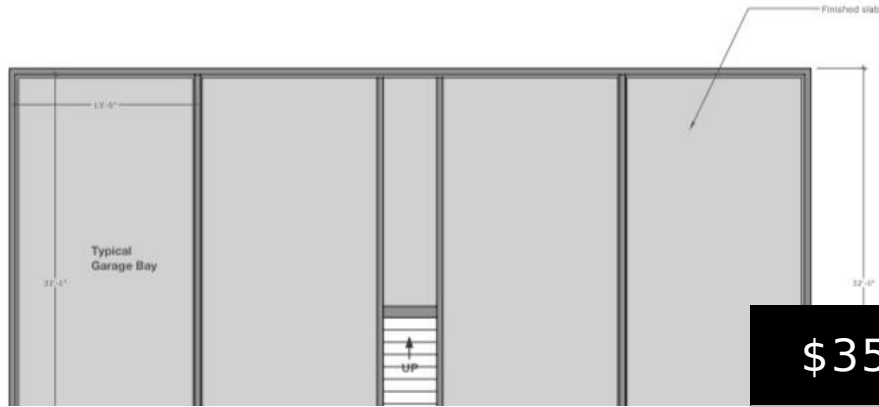


Big Building Floor Plan  
Scale 1/8" = 1'-0"



**\$350,000**

- 0 baths
- General Commercial
- Commercial Sale
- Pending

## 22 LAUDHOLM FARM ROAD, WELLS, ME, 04090

<https://agent207.com>

Introducing a versatile commercial opportunity at 22 Laudholm Farm Rd, Wells, ME 04090, ideally designed to support a wide range of business operations, including contractors, trades, retail services, and service-based professionals. Strategically positioned on highly visible Route 1, this property offers high exposure to daily traffic with convenient access for clients, suppliers, and service vehicles. [...]



---

## Basics

**Category:** Commercial Sale

**Status:** Pending

**Lot size:** 1.43 sq ft

**Subdivision Name:** Coastal Commons

**Zoning:** GB

**County:** York

**Type:** General Commercial

**Bathrooms:** 0 baths

**Year built:** 2025

**Lot Size Acres:** 1.43 acres

**Business Type:** Business Park, Commercial, Executive Suites, Medical, Office Building, Retail, Warehouse, Vehicle Related, Other, Industrial, Flex, Distribution

---

## Building Details

**Building Area Total:** 1000 sq ft

**Construction Materials:** Vinyl Siding, Vertical Siding, Shingle Siding, Wood Frame

**Sewer:** Public Sewer

**Heating:** Heat Pump

**Stories:** 1

**Building Features:** Fire System, Overhead Doors, Sprinkler - Dry

**Roof:** Shingle

**Foundation Details:** Concrete Perimeter, Slab

---

## Amenities & Features

**Electric:** Underground, On Site, Circuit Breakers

**Flooring:** Heavy Duty, Concrete

**Parking Features:** 21+ Spaces, On Site, Paved

**WaterSource:** Public

**Lot Features:** Near Turnpike/Interstate, Business District, Office Park

**Cooling:** Heat Pump

---

## Fees & Taxes

**Association Fee Frequency:** Monthly



---

# Courtesy of

**List Office Name:** The Maine Real Estate Experience

