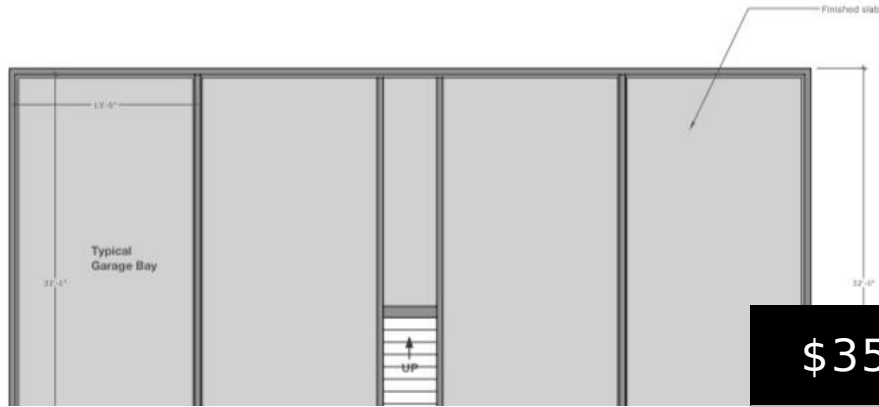


Big Building Floor Plan
Scale 1/8" = 1'-0"



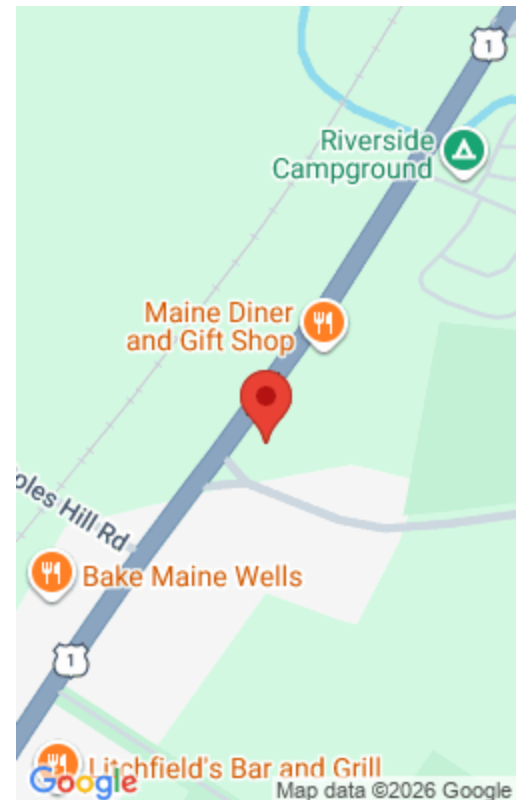
\$350,000

- 0 baths
- General Commercial
- Commercial Sale
- Active

22 LAUDHOLM FARM ROAD, WELLS, ME, 04090

<https://agent207.com>

Introducing a versatile commercial opportunity at 22 Laudholm Farm Rd, Wells, ME 04090, ideally designed to support a wide range of business operations, including contractors, trades, retail services, and service-based professionals. Strategically positioned on highly visible Route 1, this property offers high exposure to daily traffic with convenient access for clients, suppliers, and service vehicles. [...]



Basics

Category: Commercial Sale

Status: Active

Lot size: 1.43 sq ft

Subdivision Name: Coastal Commons

Zoning: GB

County: York

Type: General Commercial

Bathrooms: 0 baths

Year built: 2025

Lot Size Acres: 1.43 acres

Business Type: Business Park, Commercial, Executive Suites, Medical, Office Building, Retail, Warehouse, Vehicle Related, Other, Industrial, Flex, Distribution

Building Details

Building Area Total: 1000 sq ft **Construction Materials:** Vinyl Siding, Vertical Siding, Shingle Siding, Wood Frame

Sewer: Public Sewer

Heating: Heat Pump

Stories: 1

Building Features: Fire System, Overhead Doors, Sprinkler - Dry

Roof: Shingle

Foundation Details: Concrete Perimeter, Slab

Amenities & Features

Electric: Underground, On Site, Circuit Breakers

Flooring: Heavy Duty, Concrete

Parking Features: 21+ Spaces, On Site, Paved

WaterSource: Public

Lot Features: Near Turnpike/Interstate, Business District, Office Park

Cooling: Heat Pump

Fees & Taxes

Association Fee Frequency: Monthly



Courtesy of

List Office Name: The Maine Real Estate Experience

